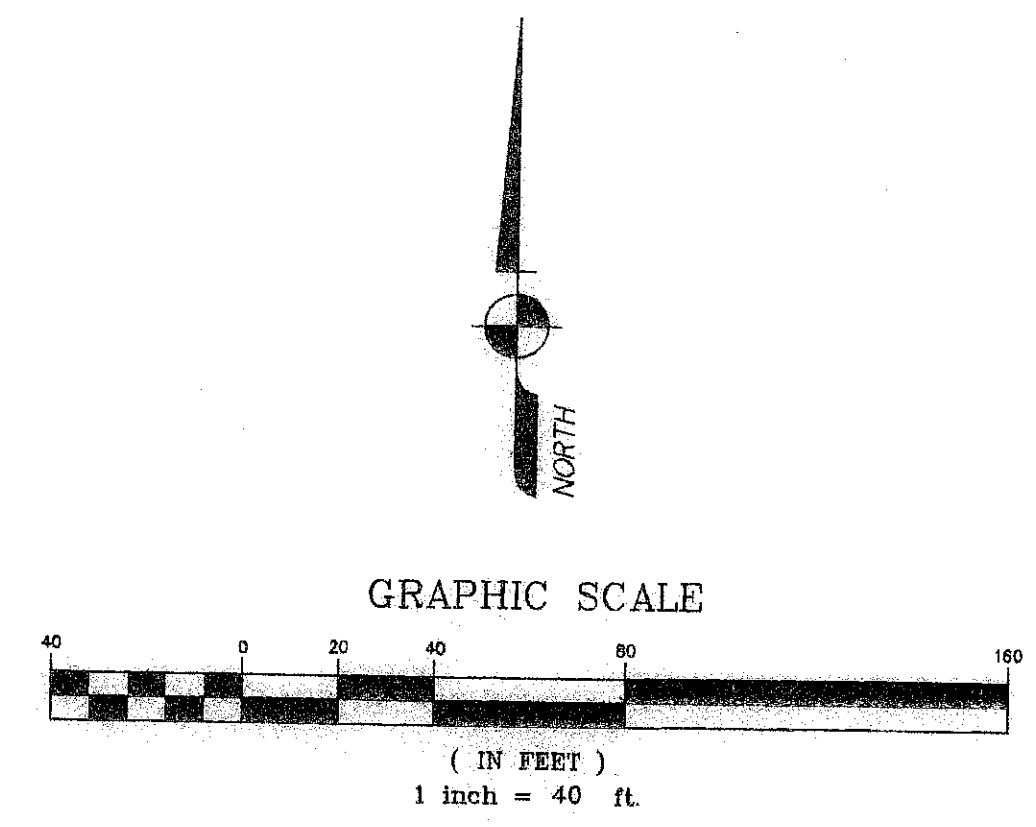


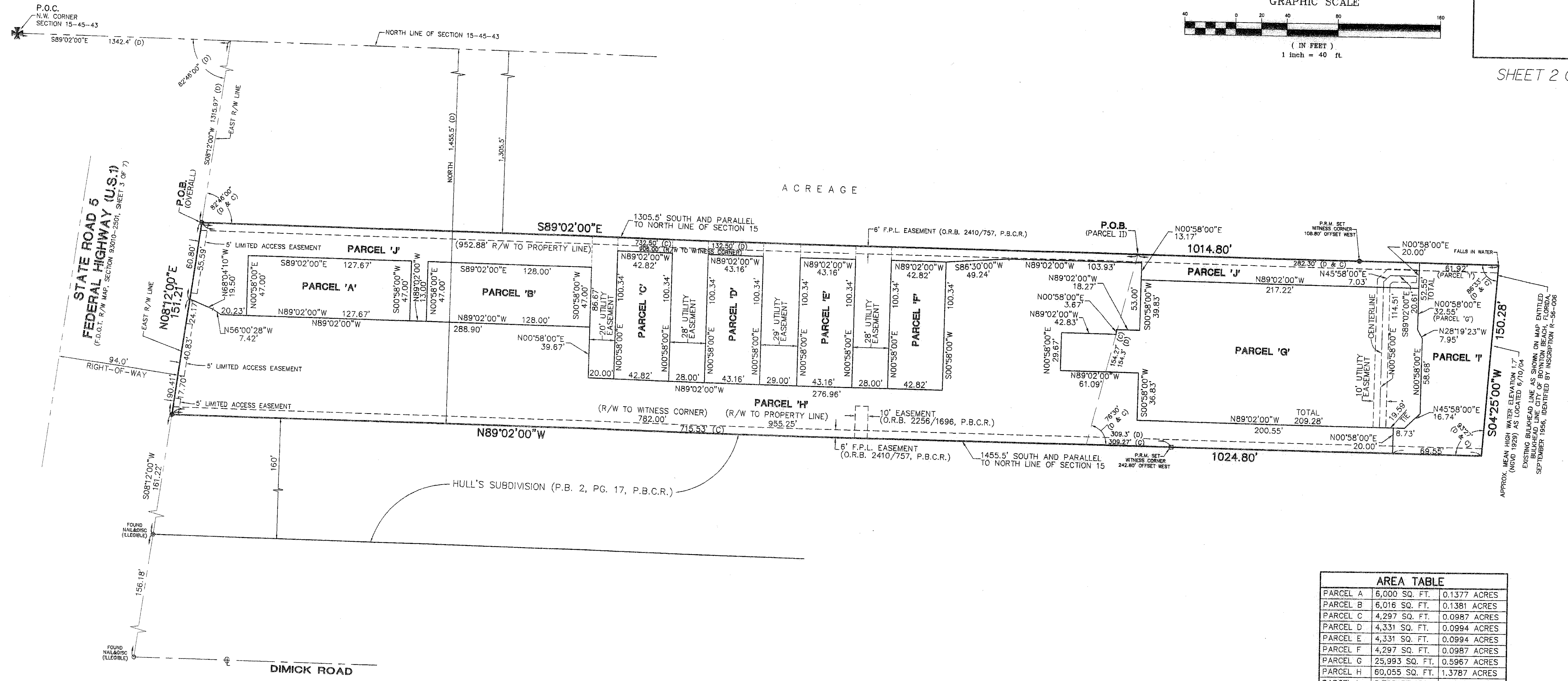
# PENINSULA, A IPUD

A PORTION OF SECTION 15, TOWNSHIP 45 SOUTH, RANGE 43 EAST,  
THE CITY OF BOYNTON BEACH, PALM BEACH COUNTY, FLORIDA.

THIS INSTRUMENT WAS PREPARED BY:  
JOHN T. DOOGAN, P.L.S.  
**AVIROM & ASSOCIATES, INC.**  
SURVEYING & MAPPING  
50 S.W. 2nd AVENUE, SUITE 102  
BOCA RATON, FLORIDA 33432  
(561) 392-2594  
OCTOBER 2007



SHEET 2 OF 2



AREA TABLE		
PARCEL A	6,000 SQ. FT.	0.1377 ACRES
PARCEL B	6,016 SQ. FT.	0.1381 ACRES
PARCEL C	4,297 SQ. FT.	0.0987 ACRES
PARCEL D	4,331 SQ. FT.	0.0994 ACRES
PARCEL E	4,331 SQ. FT.	0.0994 ACRES
PARCEL F	4,297 SQ. FT.	0.0987 ACRES
PARCEL G	25,993 SQ. FT.	0.5967 ACRES
PARCEL H	60,055 SQ. FT.	1.3787 ACRES
PARCEL I	8,726 SQ. FT.	0.2003 ACRES
PARCEL J	28,928 SQ. FT.	0.6641 ACRES
TOTAL	152,974 SQ. FT.	3.5118 ACRES

- SURVEYOR'S NOTES:**
- INDICATES SET PERMANENT REFERENCE MONUMENT - 4" X 4" CONCRETE MONUMENT, WITH BRASS DISK STAMPED, L.B. #3300.
    - INDICATES SET NAIL AND BRASS DISK STAMPED, P.R.M. L.B. #3300.
  - BEARINGS SHOWN HEREON ARE ASSUMED BASED ON THE LEGAL DESCRIPTION WITH THE EAST RIGHT-OF-WAY LINE OF FEDERAL HIGHWAY (U.S. HIGHWAY #1/ STATE ROAD NO. 5) HAVING N08°12'00"E.
  - ABBREVIATION LEGEND: BLDG= BUILDING; D= DEED MEASUREMENT; D.B.= DEED BOOK; O.R.B.= OFFICIAL RECORDS BOOK; P.B.= PLAT BOOK; P.B.C.R.= PALM BEACH COUNTY RECORDS, PG.= PAGE; P.L.S.= PROFESSIONAL LAND SURVEYOR; P.O.B.= POINT OF BEGINNING; P.R.M.= PERMANENT REFERENCE MONUMENT; R/W= RIGHT-OF-WAY; L.B.= LICENSED BUSINESS; SQ. FT.= SQUARE FEET; C= CALCULATED MEASUREMENT.

**NOTICE:**  
THIS PLAT, AS RECORDED IN ITS GRAPHIC FORM, IS THE OFFICIAL DEPICTION OF THE SUBDIVIDED LANDS DESCRIBED HEREIN AND WILL IN NO CIRCUMSTANCES BE SUPPLANTED IN AUTHORITY BY ANY OTHER GRAPHIC OR DIGITAL FORM OF THE PLAT. THERE MAY BE ADDITIONAL RESTRICTIONS THAT ARE NOT RECORDED ON THIS PLAT THAT MAY BE FOUND IN THE PUBLIC RECORDS OF PALM BEACH COUNTY.